



PU & PZV /M-SA

MANUAL POSITIVE CALIPER

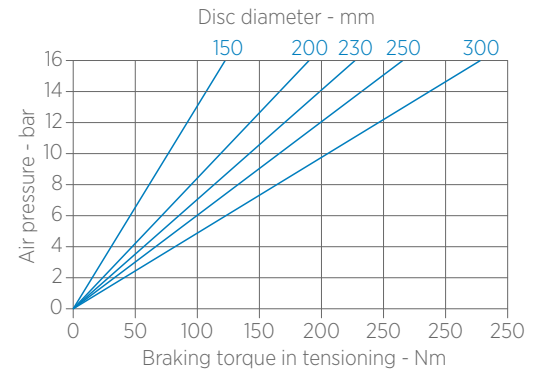
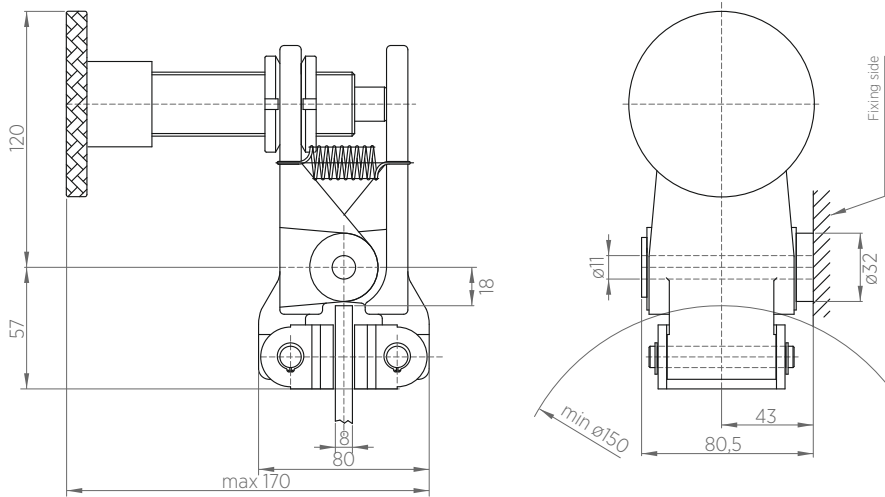
- ✓ High braking torque
- ✓ Ideal solution for emergency braking
- ✓ Auto-aligning
- ✓ Respect for the environment
- ✓ Easy installation

SA caliper brakes guarantee a very high braking torque that makes them the right solution for emergency braking in every kind of machine that handles material on reels.

The calipers are set in motion by a diaphragm piston that has to be positioned far from heat sources; they are auto-aligning and the distance of the pads from the disc is automatically regulated according to the attrition.

PU & PZV/M-SA are a manually operated calipers that can be used with our PX cast iron discs available from 150 to 610 mm of diameter, but they can also be studied according to the customer's special requirements.

PU/M-SA



TECHNICAL CHARACTERISTICS

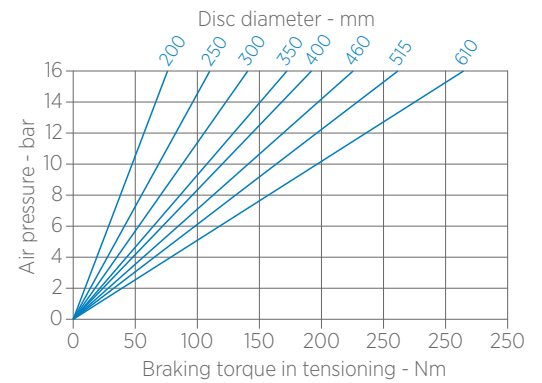
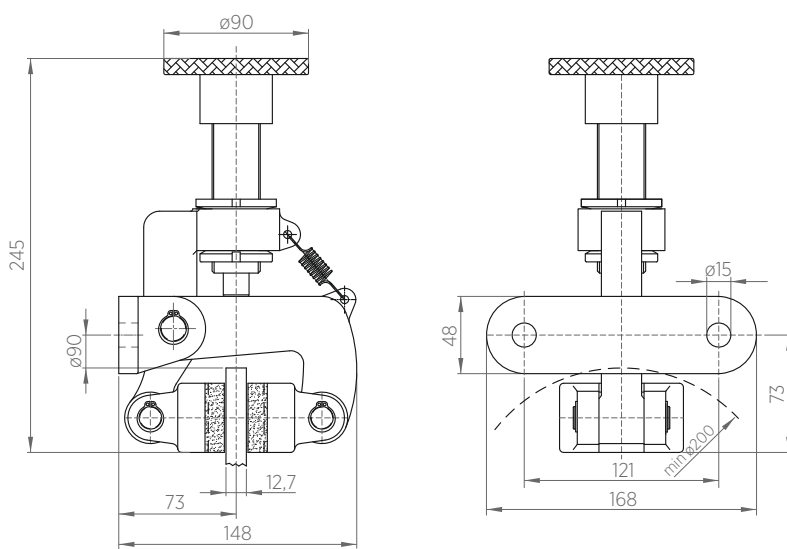
Tangential force (F) max 2540 N

Weight 3,3 kg

Pad center (Mp) 0,025 m

*Data are subject to technical change without notice

PZV/M-SA



TECHNICAL CHARACTERISTICS

Tangential force (F) max 1130 N

Weight 5,4 kg

Pad center (Mp) 0,032 m

*Data are subject to technical change without notice



Re S.p.A.
via Firenze 3
20060 Bussero (MI) Italy

T +39 02 9524301
F +39 02 95038986
E info@re-spa.com

Assistenza tecnica
Technical support
T +39 02 952430.300
E support@re-spa.com

Assistenza commerciale
Sales support
T +39 02 952430.200
E sales@re-spa.com